



Zimbabwe
**AGRICULTURAL
GROWTH**
Programme



Funded by the European Union



BREED STANDARDS FOR THE MASHONA GOAT TYPE



ACKNOWLEDGEMENTS

The VALUE project is grateful to the Goat Breeders Association of Zimbabwe for the technical input into the indigenous breed standards. We also extend our gratitude to Matopos for their invaluable contribution to the success of this assignment. Many thanks to the consultant, Mr. Joseph Sikhosana for leading the process of developing these standards, his experience in the field of indigenous goats was invaluable.

We express profound gratitude for the financial support of the European Union and the CIPS Foundation.



BREED STANDARDS MASHONA GOAT BREED STANDARDS

BACKGROUND INFORMATION

The Value Chain Alliance for Livestock Upgrading (VALUE) is a project under the European Union funded Zimbabwe Agricultural Growth Program working on commercialisation of goat production in Zimbabwe. The project is working with the Goat Breeders Association of Zimbabwe (GBAZ) and has commissioned an assignment to develop breeding standards for the Mashona goats. The standards are meant to promote conservation, utilization of indigenous goat types in Zimbabwe, and a training guide for farmers, who keep indigenous goats, to be stud breeders.

Currently tropical breeds, for example, the Boer, Kalahari, Savanna and Indigenous Veld Goats (four ecotypes) have breed standards developed from their countries of origin. On the contrary we do not have breed standards for our own indigenous goat types in Zimbabwe.

In Zimbabwe the majority of goats are of the indigenous type: the smaller type is the Small East African goat, also known as 'Mashona goat'. The Mashona goat comes in all sizes and all sorts of colours. Farmers/ breeders of indigenous goats have a choice to select coat colours to promote. They can then register with the Zimbabwe Herd Book.

This breed has survived with little or no improved management for a long time. The goat type is adapted to its respective environments . In Zimbabwe, the Mashona goat type is found in : Manicaland province (Chipinge, Buhera, Makoni, Chimanimani, Mutare districts) ; Mashonaland province (Mutoko, Mudzi, Mazowe, Guruwe, Zvimba, Chikomba, Hurungwe, Makonde, Chegutu districts); Masvingo province (Bikita , Mwenenzi, Chiredzi, districts) and parts of the Midlands province(Gokwe North and South, ,Zvishavane districts).

EXPLANATION OF BREED STANDARDS

Breed standards are based on fertility, hardiness and visual appraisal for lack of genetic defects. Conformation is related to functional efficiency without affecting the inherent traits. In general breed standards increase the economic value of a breed.



BREED:
The Mashona goat type

.....

SYNONYMS/ LOCAL NAMES:
Small East African Goat

.....

ORIGIN:
Is found mainly in Manicaland, Mashonaland provinces, Masvingo and parts of the Midlands provinces.

.....

PURPOSE OF THE BREED:
meat

GENERAL APPEARANCE AND TYPE

CONFORMATION

- It is a small compact and hardy goat. The goat has short ears and are held horizontally. It appears in multiple colours.
- Tassels or toggles or wattles hanging under the neck are common. Traditionally a goat with toggles is considered to be very "fertile".
- The males often have a "ridge of long hair along the spine ,sometimes a more or less developed mane." Females and males are of a small body frame . Both sexes have horns and they have beards sometimes.



HEAD

- The male goat should have a strong head with a straight flat, masculine and a concave face.
- The female should show feminine characteristics, and a concave shape of the head.
- The head sometimes has distinct colour markings/patterns on the face denoting a specific ecotype. Distinct colour markings/patterns can be between the eyes stretching done to the nose. It forms a V shape in black, white, brown and other colour combinations. Black, brown and white are very common with the same colours influencing body colour.
- Teeth: the lower teeth should meet evenly on the upper jaw.

Characteristic cull defects:

jaws too long, bottom jaw short, broken teeth, head is flat



HORNS

- Horns are medium in length; they bend backward and upward or slightly outward.
- Horns are present in both sexes. Horns are erect and are scimitar-shaped, heavy at the base and fine at the tip. The horns range from 2.5 cm to 20cm in length.

Characteristic cull defects:
long horns, no horns (polled)



EARS

- Ears are short, erect and held horizontally

Characteristic cull defects:
Long and pendulous ears, very short ears

BEARDS

In males the beard is conspicuous and exists in both sexes. Males have long and bushy beards. Females have short beards or none

TOGGLES

Toggles occasionally occur in both sexes.

NECK AND FOREQUARTERS

(female and males) The neck should be of moderate length in proportion to the length of the body. The height at withers should be about 50cm. The chest should be well rounded.

- Legs should be strong.
- Front legs should be of medium length and proportionate to the rest of the body. Males and females should show heavy muscles over the loin and hips, and a wide chest.

Characteristic cull defects:
long neck and disproportionate to the length of the body

BARREL

Both male and female should have a hollow, and straight profile.

Characteristic cull defects:
pinched behind the shoulder; too cylindrical

HINDQUARTER

The goats should have a sloping rump with well fleshed buttocks.

Characteristic cull defects:

rump hanging loosely, flat buttocks

LEGS

A good male must present masculine characteristic: masculinity

- Legs must be straight, strong and long ,to enable him to serve females. A female must present good strong legs (essential for a breeding female)
- Both male and female should have strong legs for browsing higher (bi- pedal stance) up the trees.

Characteristic cull defects

Legs looking weak or bowed (highly heritable); knock knees



HOOVES

- Dark and striped in colour.
- Feet should be checked for damaged or overgrown hooves. Overgrown hooves should be trimmed.

Characteristic cull defects:

Hooves pointing outwards or inwards

SKIN AND COVERING

- Hair must be short, fine and males have a ridge of long hair along the spine.
- All colours and combinations occur: white , black, brown and cream colours or mixed/pied.
- Colour variations are allowed. Colour combinations may denote a particular ecotype

Characteristic cull defects:

Too long and hairy (furry), brown neck and head, mixed colour patterns resembling Boer/Kalahari origin/ crosses.



SEXUAL ORGANS

Bucks/Rams

- Bucks/Rams should have two big balanced, healthy looking testes in one scrotum
- The scrotum should be “well attached and hang straight from the attached area of the body”.
- The scrotum should be at least 25cm in circumference

Characteristic cull defects:

Split scrotum more than 5 centimeters, one testicle



Does/Ewes

- Should have well developed udders with strong, protruding and functional teats.
- The udder should be soft to touch, any hardness indicates that the female has had a previous problem, e.g. mastitis
- Hair around the teat is not common but can be found in very few animals.

Characteristic cull defects:

Drooping/ long pendulous udder, more than two teats



SIZE

The goat should be a small compact animal. In the flock there should be some uniformity in size.

Characteristic cull defects:

Large frame, not showing characteristics of a Mashona goat type



TAIL

The tail must be straight from the base/dock, and always swing to either side. The tail is short. The tail should have the colour of the body of the animal.

Characteristic cull defects

Different colour from the body colour





REPRODUCTIVE PERFORMANCE MASHONA GOAT

Mature weights of the Mashona goat range from 25 kg to 35kg. Kid birth weight is about 2.4kgs, with weaning weights ranging from 10 to 12 kgs. Fertility is about 67.2% and litter size from 1.1 to 1.3. Twinning rates range from 14% to 30%. Gestation period is about 5 months on average.



Matabele male goat



Mashona male goat

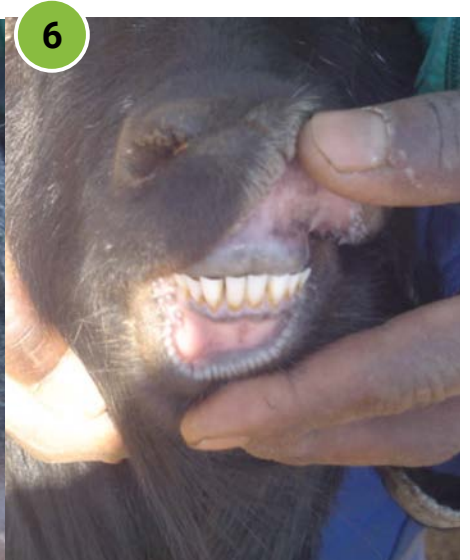
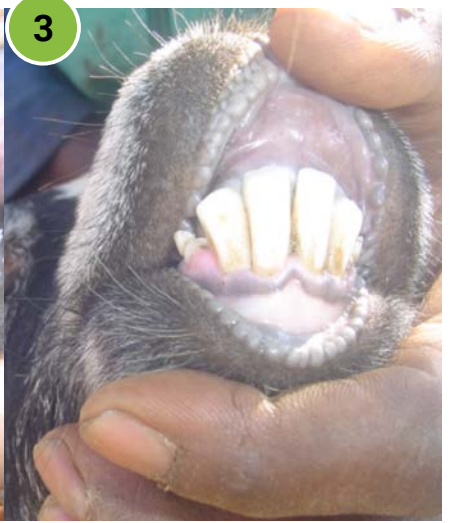
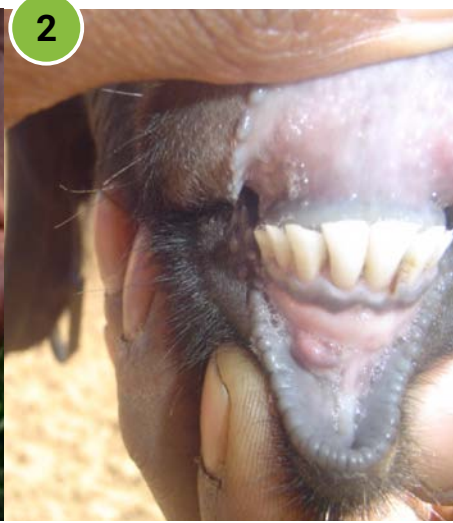


Matabele female goat



Mashona female goat

TEETH





Goats have no teeth in the upper jaw but have eight front teeth (incisors) in the lower jaw.

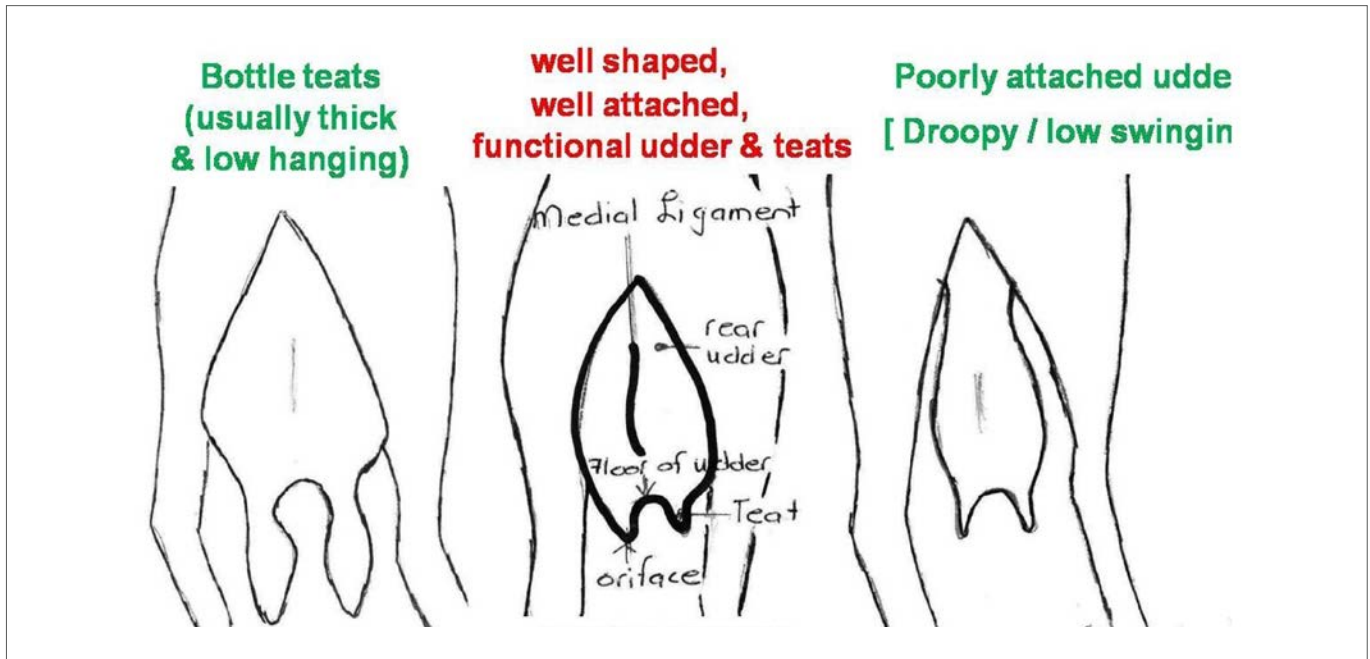
1. Milk tooth stage: less than twelve months
2. The two-tooth stage: twelve months old
3. The four-tooth stage: about two years of age
4. The six-tooth stage: 3-4 years of age
5. The full mouth stage: 4-5 years of age.
6. As the animal grows older (from six years onwards) the teeth start to wear off, spread apart, become loose and finally drop out. Front teeth worn out at adult stage
7. All teeth have dropped at old age: broken mouth

Pictures on Dentition adopted from: Goat Farming as a business: a farmer's manual to a successful goat production and marketing. Sikosana J.L.N and Senda, T.S. (2007)



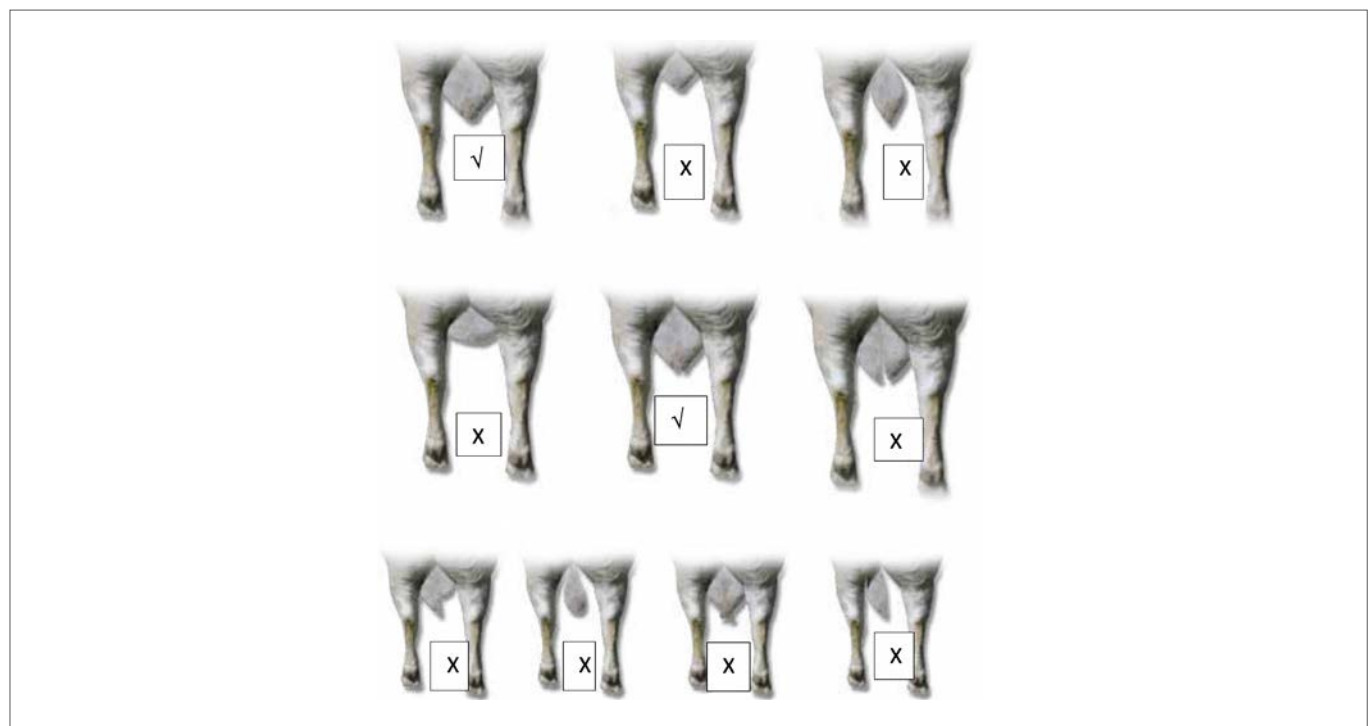
EXAMPLES OF CULL DEFECTS

UDDER AND TEATS



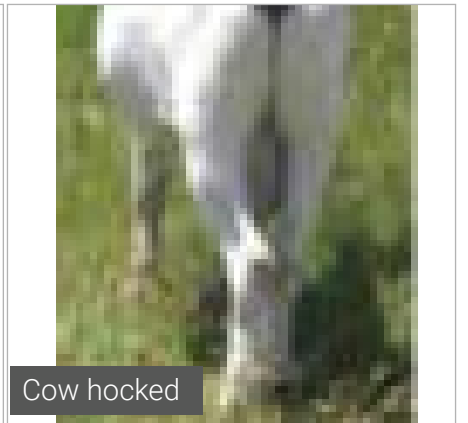
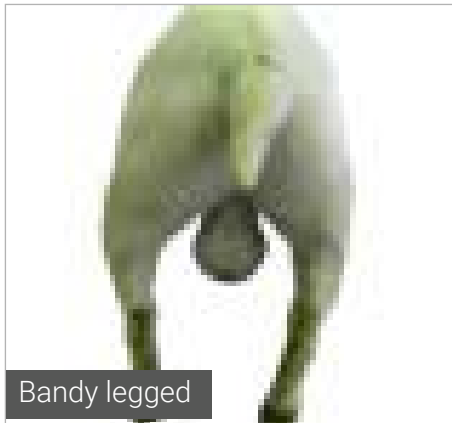
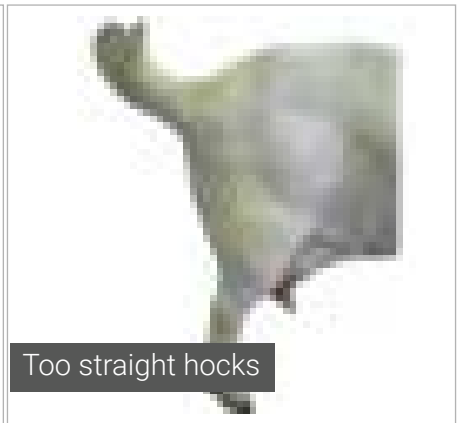
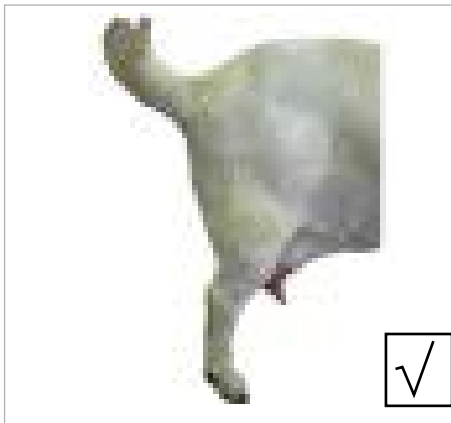
Source: IVG Joernaal 2019, page 85

TESTICLES



Source: BOERBOK_studente Boek 2014, page 61

LEGS STANCE



Source: BOERBOK, student Boek 2014, page 57

HORNLESS (POLLED) GOAT



CROSSBRED GOAT



VERY SHORT EARS



REFERENCES

1. Devendra, C. and Burns, M. 1983. Goat Production in the tropics, Commonwealth Agricultural Bureaux, Farmham Royal, Bucks, England. 184 pp.
2. Farm-Africa, 1996. Goat types of Ethiopia and Eritrea, physical description and management systems. Published jointly by Farm-Africa, London, United Kingdom, and International Livestock Research Institute (ILRI), Nairobi, Kenya.76pp.
3. Gall, Christian.1996.Goat breeds of the world. Centre for Agriculture in the Tropics and Sub- Tropics (CTA).
4. Matopos Research Station. 2003. Fact Sheet: Animal Genetic Resources (AnGR) Survey.
5. Payne and Wilson. 1999. Introduction to animal husbandry in the tropics. Wiley-Blackwell.768pp
6. Sikosana J.L.N. and Senda, T.S. 2007.Goat farming as a business: A farmer's manual to successful goat production and marketing. Supported by SNV, Netherlands Development Organization.49pp.
7. Steele, M. 1996. Goats. Centre for Agriculture in the Tropics and Sub-Tropics (CTA).

act:onaid



Shamiso Farms

